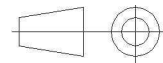
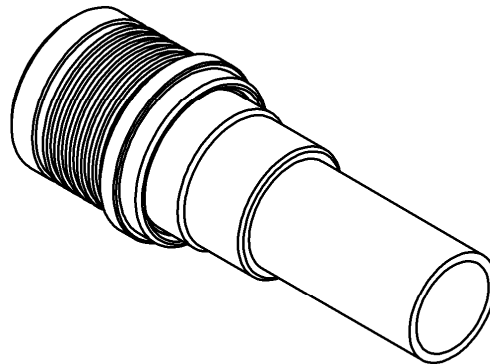
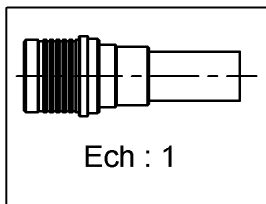
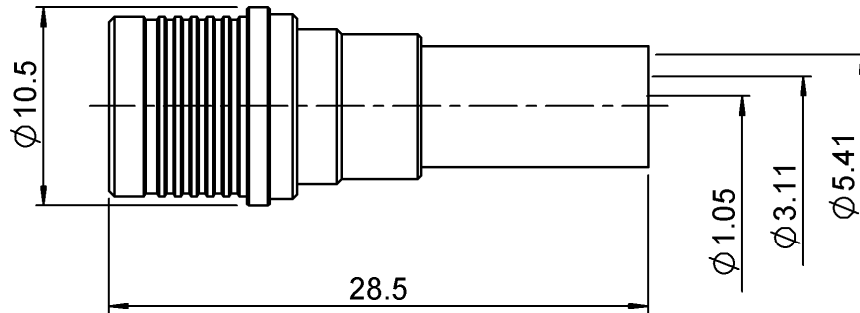


STRAIGHT PLUG FULL CRIMP

R123.075.000

CABLE 5/50 S

Series : QMA



All dimensions are in mm.

COMPONENTS	MATERIALS	PLATINGS (μm)
BODY	BRASS	BBR 2
CENTER CONTACT	BRASS	NPGR
OUTER CONTACT	BRASS	BBR 2
INSULATOR	PTFE	
GASKET	-	
OTHERS PARTS	BRASS	BBR 2
-	-	-
-	-	-

Issue : 0923 F

In the effort to improve our products, we reserve the right to make changes judged to be necessary.



RADIALL[®]

STRAIGHT PLUG FULL CRIMP

R123.075.000

CABLE 5/50 S

Series : QMA

PACKAGING

Standard	Unit	Other
100	'W' option	Contact us

SPECIFICATION

28C87307T RevA

CABLE ASSEMBLY

ELECTRICAL CHARACTERISTICS

Stripping	a	b	c	d	e	f
mm	3,00	6,50	11,3	0,00	8,30	0,00

Impedance	50	Ω
Frequency	0-6	GHz
VSWR	+ 0,0000	x F(GHz) Maxi
Insertion loss	.05	\sqrt{F} (GHz) dB Maxi
RF leakage	- (80)	- F(GHz)) dB Maxi
Voltage rating	335	Veff Maxi
Dielectric withstanding voltage	1000	Veff mini
Insulation resistance	5000	M Ω mini

Assembly instruction : **Crimp 02**

Recommended cable(s)
 RG 141
 KX 15
 RG 58

Characteristics indicated on this data sheet are those that can be achieved with the highest performance cable. Intrinsic limitations of the cable may diminish the performance of the assembly

MECHANICAL CHARACTERISTICS

Cable retention
 - pull off **180** N mini
 - torque **NA** N.cm

Center contact retention	
Axial force – Mating end	18 N mini
Axial force – Opposite end	18 N mini
Torque	NA N.cm mini

Recommended torque	
Mating	NA N.cm
Panel nut	NA N.cm
Clamp nut	NA N.cm
A/F clamp nut	0,0000 mm

Mating life	100 Cycles mini
Weight	6,6610 g

TOOLING

Part Number	Description	Hexagon
.	.	.
R282.281.000	CRIMPING TOOL	2x4 (pos. 7)
R282.967.015	POSITIONER FOR CRIMPING TOOL	
R299.511.016	STRIPPING CASSETTE .059/.248	denudage B, E
. And - (et)		
R282.223.000	CRIMPING TOOL	5.41
. Or - (ou)		
R282.293.000	CRIMPING TOOL M22520/5-01	
R282.235.011	CRIMPING DIES M22520/5-11	5.41

ENVIRONMENTAL

Operating temperature	-40/+105 °C
Hermetic seal	NA Atm.cm3/s
Panel leakage	NA

OTHERS CHARACTERISTICS

VSWR : 1.12 max from 0 to 3GHz
 Intermod.: -120 dBc at 1.8GHz (2x20W)
 RF leakage(interf.): 3<F<6GHz: >70dB

Issue : 0923 F

In the effort to improve our products, we reserve the right to make changes judged to be necessary.

