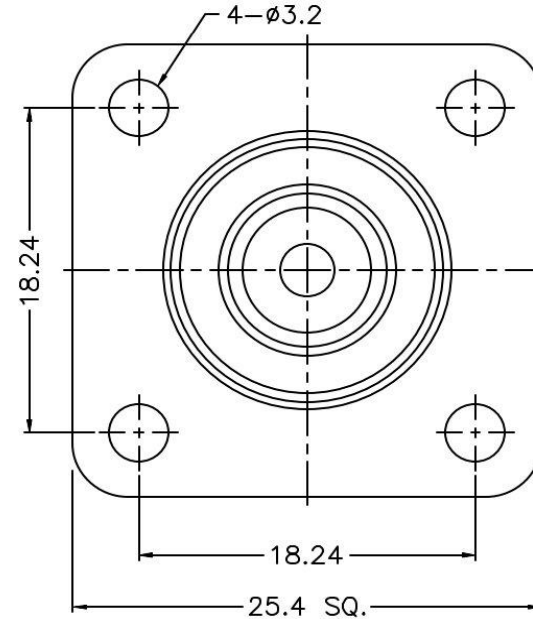
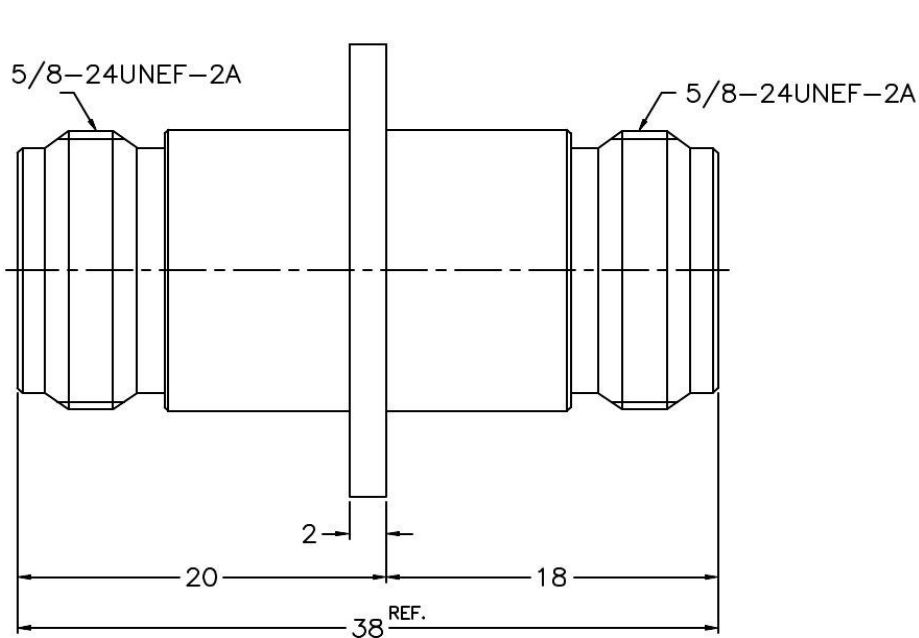


PRODUCT: N FEMALE TO N FEMALE PANEL MOUNT FLANGE 4 SCREW ADAPTER

PRODUCT CODE: E3870, Paratronic Oy

Description	Material	Note	General information	
Contact pin	Beryllium copper	1	Dimensions in millimeters (mm), unless otherwise specified. RoHS compliant. Directive 2015/863 with exemption 6(c) Note, finish, plating thickness in micro-inches, μin (minimum): 1. Gold (3) over nickel (50) over copper (50) 2. Nickel (100) over copper (50) Mating cycles: 500 min. Temperature range: -65 ... +165 °C	Impedance 50 ohm Frequency range DC - 11 GHz VSWR 1.20 max Insertion loss ≤ 0.4 dB Insulator resistance ≥ 5 G Ω Resistance, center contact ≤ 1.5 m Ω , outer c. ≤ 0.25 m Ω Test voltage 2500 V rms, working voltage 1400 V rms Power handling ≤ 700 W @ 2 GHz
Insulator	PTFE	-		
Body	Brass	2		



Title	Value
Drawing date	27.9.2025
Version	A
Website	www.paratronic.fi